



GMT MONTHLY MEMBERSHIP PROGRESS REPORT

Results as of: 5/31/2020

Multiple District 26

LOCATION: MISSOURI

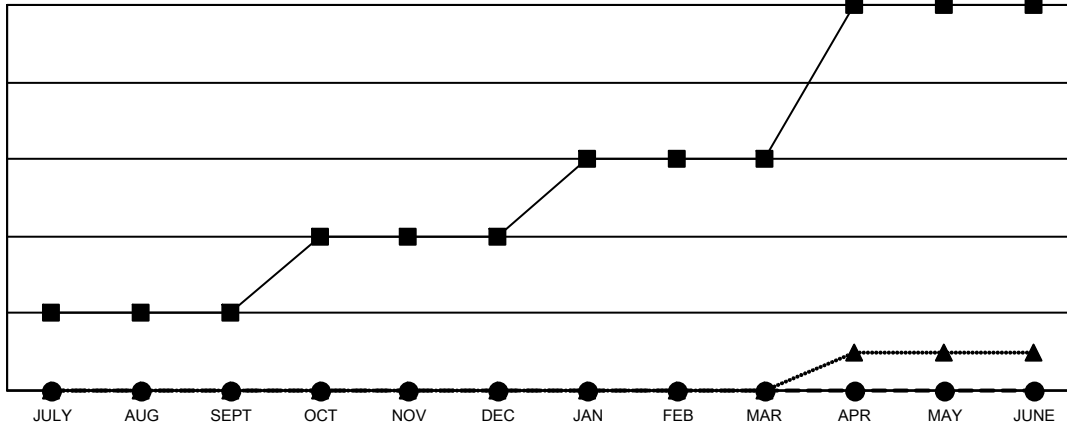
GMT: OPEN

GMT CA 1

Clubs			
RESULTS FOR 2019-2020			
QUARTER	NEW CLUB GOAL	NEW CLUBS	DROPPED CLUBS
JULY/AUG/SEPT	2	0	1
OCT/NOV/DEC	2	0	3
JAN/FEB/MAR	2	0	1
APR/MAY/JUNE	4	0	0

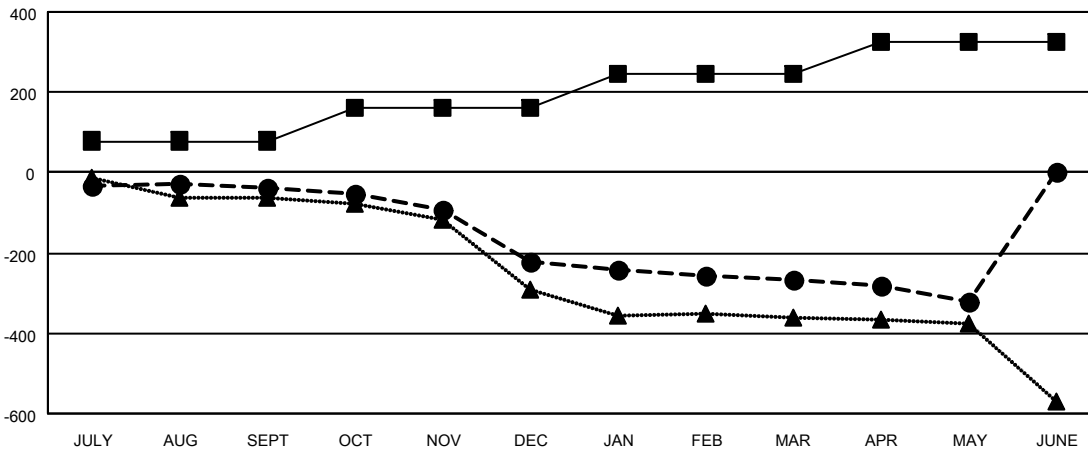
Members			
RESULTS FOR 2019-2020			
QUARTER	MEMBER GROWTH NET GOAL	MEMBER GROWTH ACTUAL	DROPPED MEMBERS ACTUAL (including transfers)
JULY/AUG/SEPT	79	193	210
OCT/NOV/DEC	80	105	283
JAN/FEB/MAR	87	137	168
APR/MAY/JUNE	81	39	85

GOALS AND ACTUAL NEW CLUBS CUMULATIVE



- - CURRENT YEAR GOALS FOR NEW CLUBS
- - CURRENT YEAR ACTUAL NEW CLUBS
- ▲ - LAST YEAR ACTUAL NEW CLUBS

GOALS AND ACTUAL MEMBERS CUMULATIVE



- - MEMBER GROWTH NET GOAL
- - MEMBER GROWTH ACTUAL
- ▲ - LAST YEAR MEMBERSHIP ACTUAL

DROPPED CLUBS: 5	148 CLUBS OF 320 ADDED 1 OR MORE NEW MEMBERS	GENDER DISTRIBUTION
		MALE 5,903 (73.08%)
		FEMALE 2,175 (26.92%)
DROPPED MEMBERS	CLICK HERE FOR CUMULATIVE MEMBERSHIP DATA	TOTAL FAMILY UNIT MEMBERS 1,340
DECEASED 99		FAMILY MEMBERS PAYING HALF DUES 688
CLUB CANCELLED 30		
OTHER 617		
TOTAL 746		